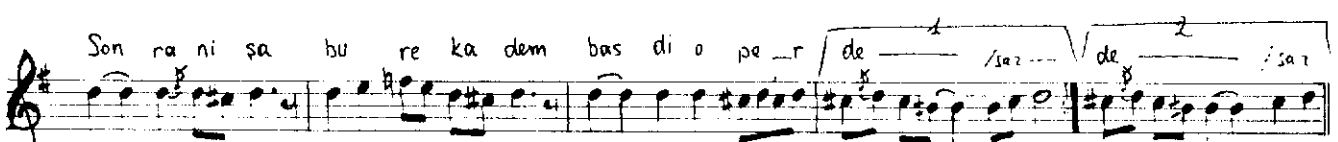
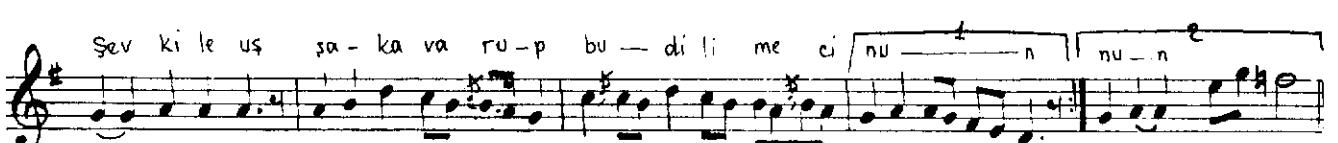
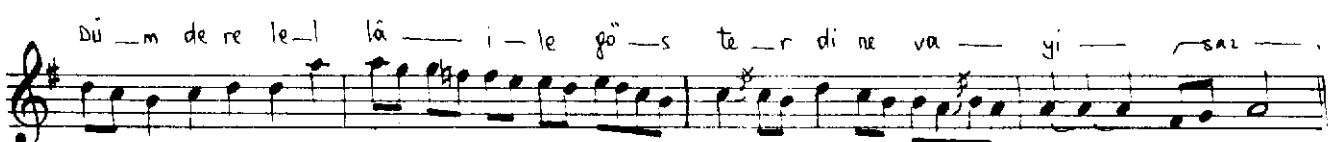
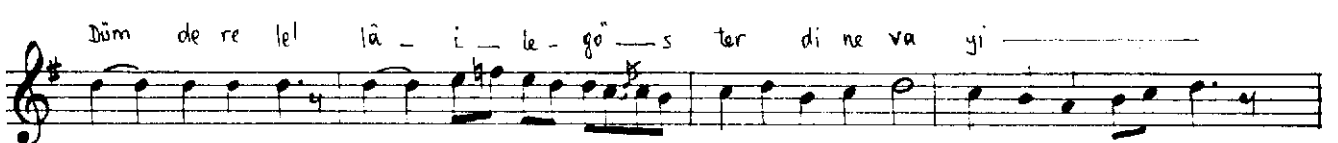
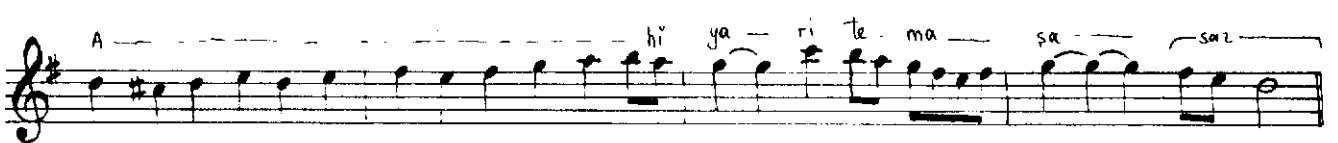
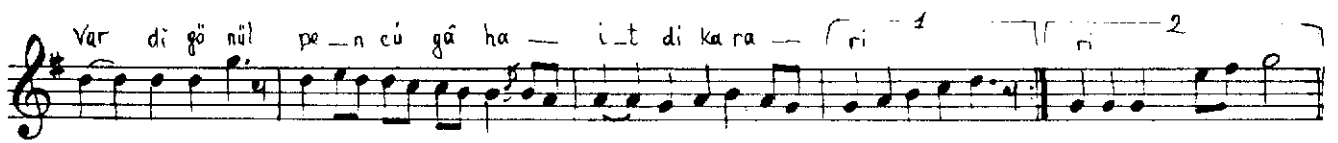
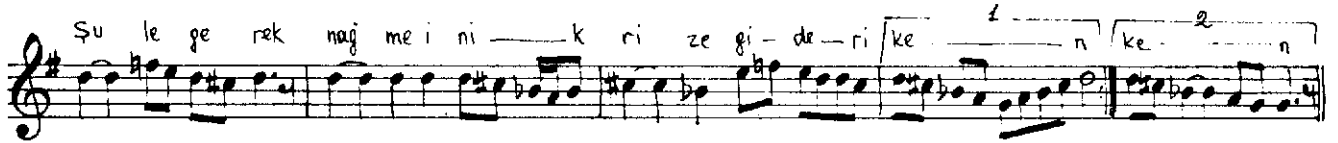
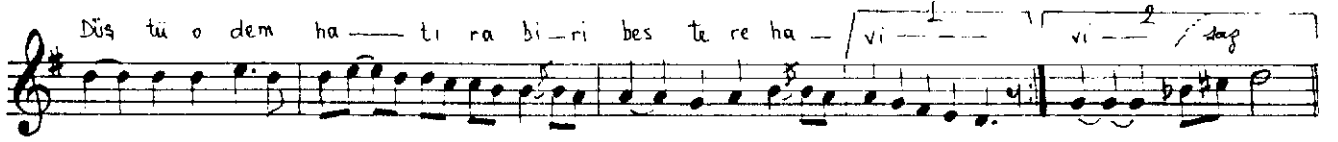
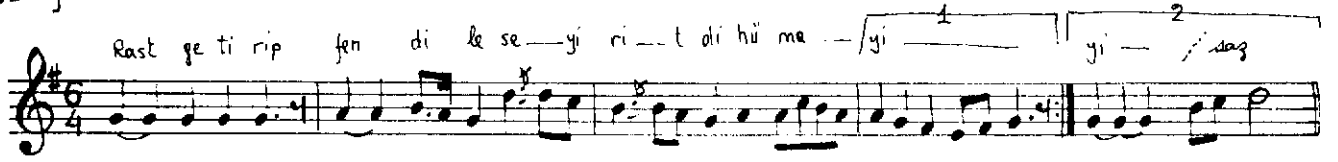
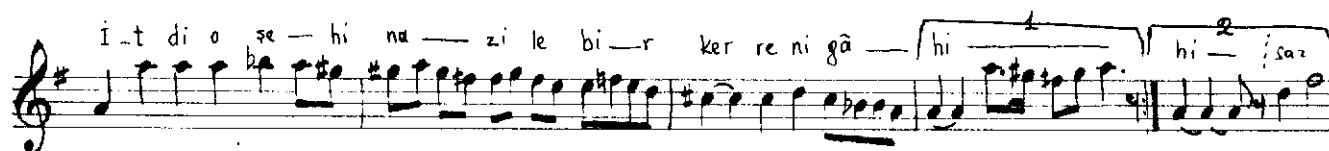
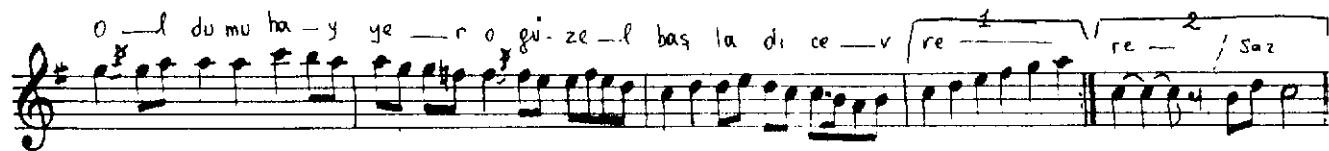
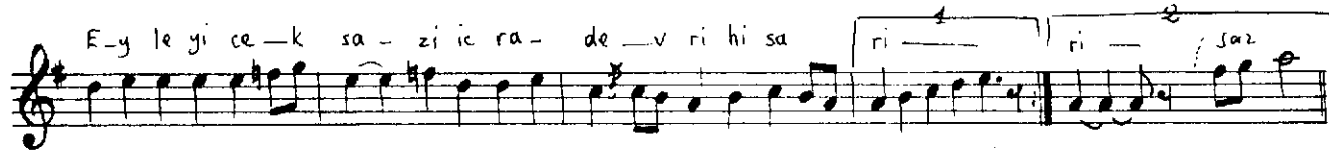
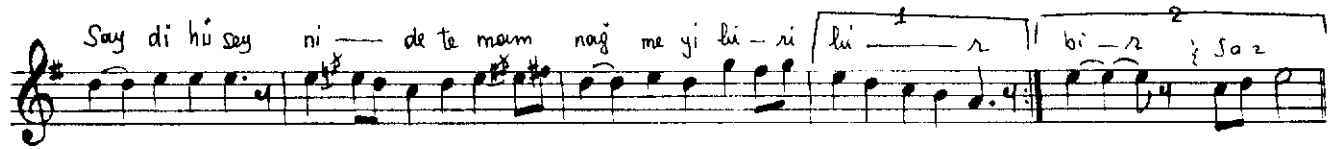
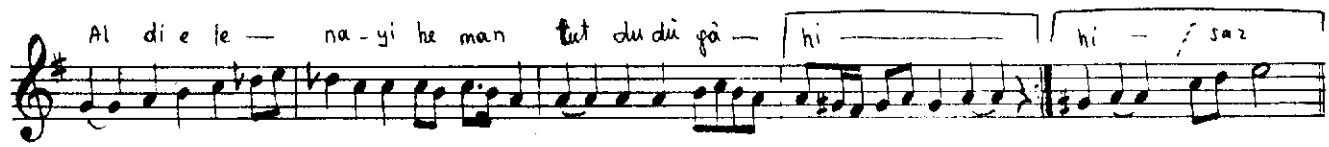
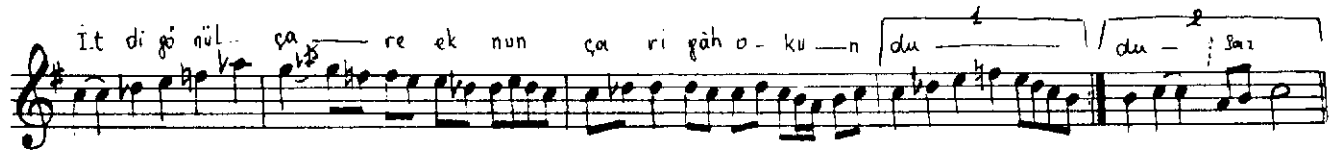
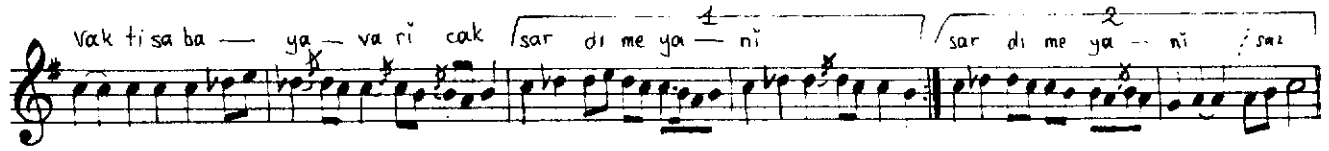
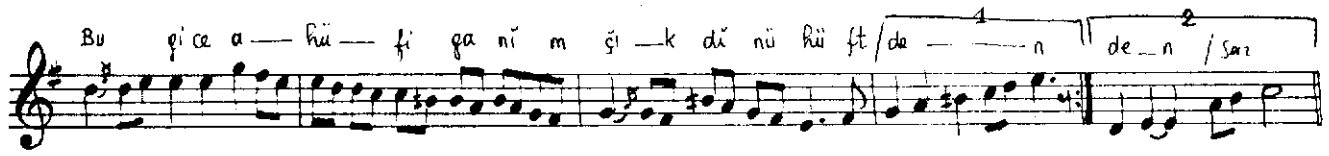
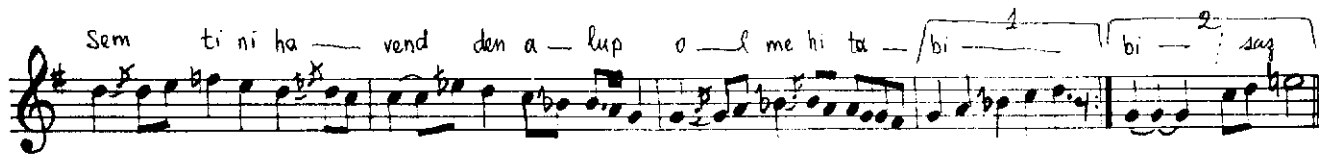


( Rast ) faslinda sahili meçhul Kârî natik  
eski lûr eser

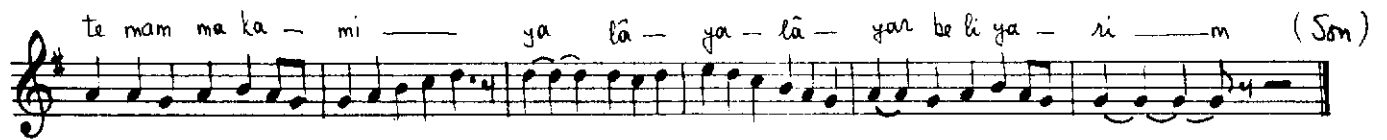
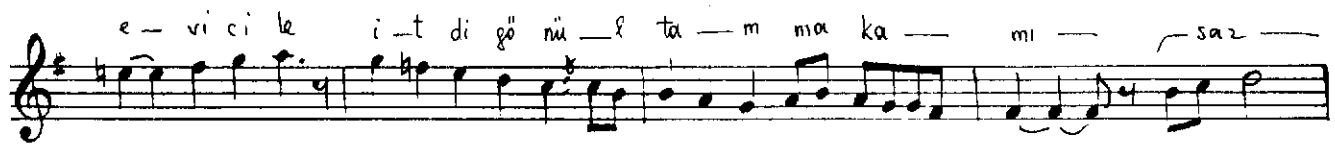
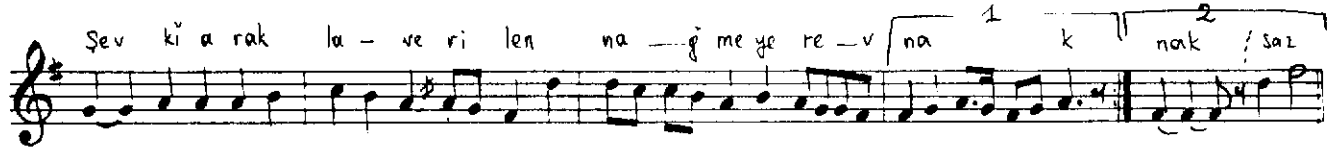
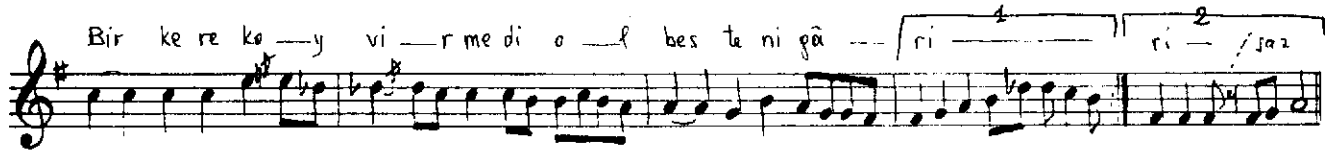
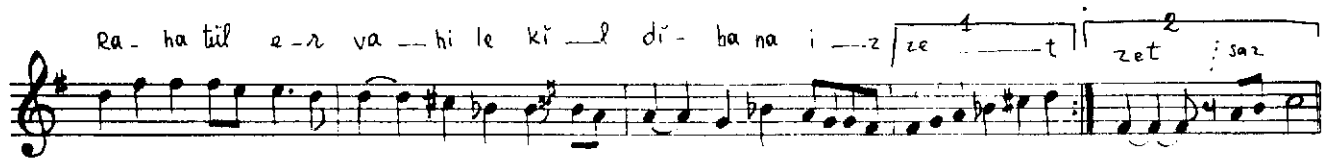
[J- ]











(Râst) getirip fendile seyretti hümayi  
Düştü o dem hatıra bir beste (rehâvî)  
Şule gerek nağme-i (nikrize) giderken  
Vardı gönül (pencügâhe) itti kararı  
Anda durup eyledi (mâhûri) temaşa  
Dümdere lel lâ ile gösterdi (nevâyî)  
Şevkile (uşşâka) varup bu dili mecnun  
Eyledi tanbûr ile bir nağme (beyâtî)  
Sonra (nişâbure) kadem basdı o perde  
Semti (nihâvend) den alup ol mehitabi  
Bu gice ahu figanim çıkdı (nühüft) den  
Vakti (sabâya) varıcak sardı meyânı  
İtti gönül çare eknun (çarigâh) okundu  
Aldı ele nayi heman tuttu (dügâhi)

Saydı (hüseynide) tamam nağmeyi bir bir  
Eyleyicek saz icra devri (hisari)  
Oldu (muhayyer) o güzel başladı cevre  
(Puselik) için idicek gizli niyazi  
Gûyi (hicaze) varıcak payine düştüm  
İtti o (şehnaz) ile bir kerre nigâhı  
(Rahatül ervah) ile kıldı bana izzet  
Bir kerre koyvermedi ol (bestenigâri)  
Şevki (arakla) verilen nağmeye revnak  
(Evic) ile itti gönül tam makamı  
Hey hey hey hey hey hey yâr yâr ye lel  
lelel lelli dost ye lel lelel lelli  
(Râst) tana tana tamam makamı  
yalâ yalâ yâr beli yârim